

# **CORPORATE PLAN**

**2009 - 2012**



## **WEIPA TOWN AUTHORITY POLICY**

# **Corporate Plan**

**Policy Number:** WTA – P – CG02  
**Version:** 2009-2012

**Date Adopted:** Jun-09  
**Review Date:** Jun-10

### **WTA VISION**

Weipa: a diverse and sustainable community, the hub of our unique Cape lifestyle.

### **WTA MISSION**

Working together to improve Weipa lifestyle.

### **WTA GUIDING PRINCIPLES**

**Service** – Recognising that service to our community is our reason for being, and providing service in a courteous, timely, and responsive manner.

**Integrity** – Acting in an honest, impartial and trustworthy manner, and engendering a confidence both within our community and our organisation that this is the case.

**Excellence** – Delivering quality outcomes based on reliable information, a responsive approach, and the desire to continuously improve.

**Valuing people** – Valuing the contribution that people inside and outside the organisation make to achieve the town's vision. Acknowledging and appreciating the cultural diversity in our community.

**Commitment** – Ensuring our actions serve the people of Weipa and their long-term interests.

**Value** – Providing services and facilities that offer value for the community in terms of cost, quality and reliability, and that are economically and ecologically sustainable.

**Participation and consultation** – Providing genuine opportunities for informed community involvement in decision making, in a framework of local democracy.



## WEIPA TOWN AUTHORITY POLICY Corporate Plan

**Policy Number:** WTA – P – CG02  
**Version:** 2009-2012

**Date Adopted:** Jun-09  
**Review Date:** Jun-10

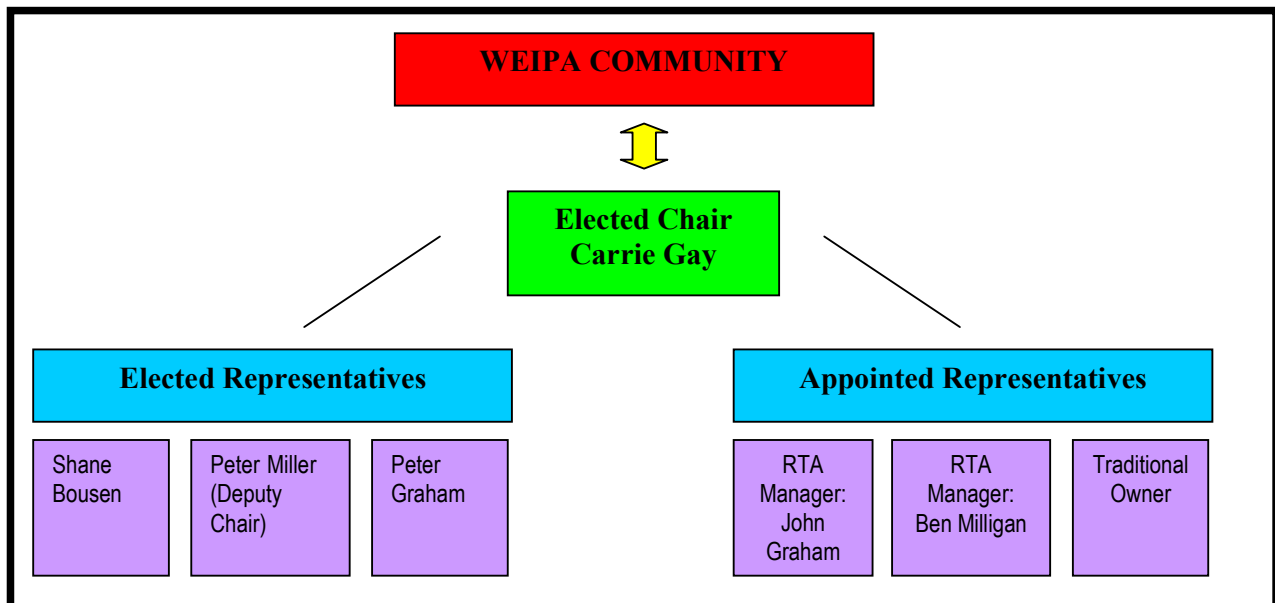
### MESSAGE FROM THE CHAIRPERSON AND CEO

The function of local government for the Weipa Local Authority Area is provided within the Comalco Act 1957, imposing responsibilities and obligations of the Local Government Act in management of the Town. The Weipa Town Authority (WTA) elected in March 2008 emulates a future local governing body for the Town.

The Town must be managed with a clear vision for the future, providing focus on the goals and the objectives and pathways for that vision to be realised.

This plan defines that vision and identifies long term strategic issues. Annual action plans are included in the WTA Operational Plan.

The present WTA has a Chair and three WTA Members elected by the Weipa community. In addition there are two Members appointed by Rio Tinto Alcan, and two Traditional Owner Representatives (one voting and one non-voting).



The WTC has five main sub-committees.

1. Chairpersons Report – Carrie Gay
2. Finance and Administration – John Graham
3. Community and Social – Shane Bousen
4. Works and Engineering – Peter Miller
5. Planning and Development – Peter Graham



# WEIPA TOWN AUTHORITY POLICY

## Corporate Plan

**Policy Number:** WTA – P – CG02  
**Version:** 2009-2012

**Date Adopted:** Jun-09  
**Review Date:** Jun-10

<b>CHAIRPERSON</b>	
<p>Town Governance Structure</p> <p>Regional Local Government focus</p> <p>Communications</p> <p>Lobbying</p> <p>Tourism</p> <p>Funding:</p> <ul style="list-style-type: none"> <li>- GST parity with other Local Governments</li> <li>- Local Government Funding</li> <li>- Sport &amp; Rec Facility</li> </ul>	<p>Memberships:</p> <ul style="list-style-type: none"> <li>- Regional Organisation of Councils Cape York (ROCCY)</li> <li>- Cape York Peninsula Development Association (CYPDA)</li> <li>- Regional Partnership</li> <li>- Weipa Town Traditional Owner's Group (WTOG)</li> <li>- Western Cape College Management Board</li> <li>- Chamber of Commerce</li> </ul>

<b><u>FINANCE &amp; ADMINISTRATION</u></b>
<p><b>Corporate Governance</b></p> <ul style="list-style-type: none"> <li>- Corporate Plan</li> <li>- Operational Plan</li> <li>- Annual Report</li> <li>- RTA WTA Protocols</li> <li>- Policies, &amp; Procedures</li> <li>- Legal matters</li> <li>- Local Laws</li> </ul> <p><b>Finance</b></p> <ul style="list-style-type: none"> <li>- Annual Budget</li> <li>- Annual Audit</li> <li>- Financial Statements</li> </ul> <p><b>Administration</b></p> <ul style="list-style-type: none"> <li>- WTA Secretariat</li> <li>- Communications</li> </ul>

<b><u>COMMUNITY &amp; SOCIAL</u></b>
<p><b>Community</b></p> <ul style="list-style-type: none"> <li>- Community communication and participation</li> <li>- Community Events</li> </ul> <p><b>Library</b></p> <p><b>Sports and Recreation</b></p> <p><b>Youth</b></p> <p><b>Radio &amp; TV</b></p> <p><b>Health Safety &amp; Environment</b></p> <ul style="list-style-type: none"> <li>- Public Health</li> <li>- Safety System</li> <li>- Environmental Management Strategy</li> <li>- Animal Control</li> <li>- Waste Disposal</li> </ul>

<b><u>WORKS &amp; ENGINEERING</u></b>
<p><b>Asset Management</b></p> <ul style="list-style-type: none"> <li>- Capital &amp; Operating</li> </ul> <p><b>Community Property</b></p> <p><b>Parks &amp; Gardens</b></p> <p><b>Water Supply</b></p> <p><b>Sewerage</b></p> <p><b>Roads</b></p> <ul style="list-style-type: none"> <li>- Construction of road works including pavements, paths, kerb &amp; gutter and drainage subdivision.</li> <li>- Crossings</li> </ul> <p><b>Projects</b></p> <p><b>Purchasing &amp; Contracts</b></p>

<b><u>PLANNING &amp; DEVELOPMENT</u></b>
<p><b>Integrated Planning Act 1997</b></p> <p><b>Far North Qld Regional Organization of Councils</b></p> <p><b>Urban Design</b></p> <p><b>Planning Policy No.1</b></p> <p><b>Building Code Act &amp; Regs</b></p> <p><b>Building</b></p> <ul style="list-style-type: none"> <li>- Applications / Approvals / Inspections / Finals</li> </ul> <p><b>Town Planning</b></p> <ul style="list-style-type: none"> <li>- Applications / Approvals</li> <li>- Subdivision</li> </ul> <p><b>Land</b></p> <p><b>Disaster Management</b></p>



## WEIPA TOWN AUTHORITY POLICY

# Corporate Plan

**Policy Number:** WTA – P – CG02  
**Version:** 2009-2012

**Date Adopted:** Jun-09  
**Review Date:** Jun-10

## 1.0 Chairperson

*Key Strategic Issues:*

- Governance
- Funding
- Communication

*Program:*

No	Description
1.1	Facilitate a formal agreement between WTA, RTA and relevant Government bodies regarding the future Governance of Weipa.
1.2	Develop a strategy for funding the capital requirements of Weipa.
1.3	Continue to support regional tourism strategies.
1.4	Develop relationships with Napranum, Mapoon, and Aurukun Councils with the view to developing long-term initiatives.
1.5	In partnership with local agencies and regional councils increase government presence and contribution in Weipa.
1.6	Improve Town and Region information sharing.
1.7	Promote and encourage local employment.
1.8	Promote and encourage industry and small business diversity and investment in Weipa.



## **WEIPA TOWN AUTHORITY POLICY**

### **Corporate Plan**

**Policy Number:** WTA – P – CG02  
**Version:** 2009-2012

**Date Adopted:** Jun-09  
**Review Date:** Jun-10

## **2.0 Administration and Finance**

### *Key Strategic Issues:*

- RTA WTA Management Protocols
- Corporate Governance Improvement Program

### *Program:*

<b>No</b>	<b>Description</b>
2.1	Implement RTA WTA Management Protocols with the view to completing Milestone 7 – restructure of Town Office with CEO reporting directly to WTA.
2.2	Ongoing implementation of Corporate Governance Improvement Program.
2.3	Develop and adopt appropriate policies, procedures and local laws.



## WEIPA TOWN AUTHORITY POLICY

### Corporate Plan

**Policy Number:** WTA – P – CG02  
**Version:** 2009-2012

**Date Adopted:** Jun-09  
**Review Date:** Jun-10

### 3.0 Community and Social

*Key Strategic Issues:*

- Sport & Recreation facilities
- Police
- Regional Health Services

*Program:*

No.	Description
3.1	Sports and Recreation – Implement Stage 2 of Sports and Recreation Plan. – Ensure placement of a Regional Sport & Recreation Officer in Weipa.
3.2	Community – Lobby for improved Police presence in Weipa. – Develop strategies for changing community demographics.
3.3	Participate in Alcohol Management Plan review.
3.4	Implement WTA Health & Safety System.
3.5	Implement Environmental Management System.
3.6	Develop and adopt appropriate policies and procedures.



**WEIPA TOWN AUTHORITY POLICY**  
**Corporate Plan**

**Policy Number:** WTA – P – CG02  
**Version:** 2009-2012

**Date Adopted:** Jun-09  
**Review Date:** Jun-10

## 4.0 Works and Engineering

*Key Strategic Issues:*

- Water Management Plan
- Improve road conditions

*Program:*

No.	Description
4.1	Ongoing implementation of Water Management Plan policy and procedures.
4.2	Improve town parks and gardens.
4.3	Develop a Public Building Asset Management Plan.
4.4	Implement town storm water drainage, kerbing and channelling, and roads projects.
4.5	Develop a refuse collection and disposal recycling program.
4.6	Develop a WTA Contracts Management System including Civil Works preferred supplier contracts.
4.7	Develop and adopt appropriate policies and procedures.



## WEIPA TOWN AUTHORITY POLICY Corporate Plan

**Policy Number:** WTA – P – CG02  
**Version:** 2009-2012

**Date Adopted:** Jun-09  
**Review Date:** Jun-10

### 5.0 Planning & Development

*Key Strategic Issues:*

- Town Plan and Urban Design
- Town Boundaries
- Disaster Management

*Program:*

No.	Description
5.1	Develop and improve the Town Plan.
5.2	Lobby for the extension of town boundaries.
5.3	Ongoing development of Town Planning and Building policies and procedures.
5.4	Review and improve Disaster Management Plans.