

TOWN OF WEIPA

LOCAL PLANNING POLICY NUMBER 1

DUPLEX DWELLING & MULTIPLE DWELLING DESIGN AND SITING GUIDE

This policy is made in accordance with the provisions of Section 1A(4) of the Local Government (Planning & Environment) Act, 1990.

Date of adoption :

Dates of amendment :

:

:

LOCAL PLANNING POLICY NUMBER 1

DUPLEX DWELLING & MULTIPLE DWELLING DESIGN & SITING GUIDE

TABLE OF CONTENTS

Page No

1.	INTRODUCTION	1
2.	OBJECTIVES OF POLICY	3
2.1	GENERAL OBJECTIVE	3
2.2	AMENITY	3
2.3	SAFETY	3
2.4	PARKING	3
2.5	HEALTH	3
2.6	CLIMATE	4
2.7	SERVICES	4
3.	LAND SUITABLE FOR DUPLEX DWELLINGS & MULTIPLE DWELLING	5
4.	DEVELOPMENT STANDARDS	6
4.1	INTRODUCTION	6
4.2	DENSITY CONTROL	6
4.3	VEHICLE ACCESS, DRIVEWAYS AND CARPARKING	9
4.4	ON-SITE OPEN SPACE	11
4.5	BUILDING SETBACKS	14
4.6	SCREENING	15
5.	DEFINITIONS	17

1. INTRODUCTION

- 1.1 This policy is designed to provide a clear guide to applicants for duplex dwellings or multiple dwellings. The policy will be relied upon by the Town Commission to assist in determining the outcome of applications.
- 1.2 The policy does not apply in respect of a dwelling house where no other dwelling house is already erected on the land.
- 1.3 Land use control is exercised through the Interim Development Control Regulation. Application for an Interim Development Permit must be made for all residential use other than as described at Section 1.2 above.
- 1.4 In deciding an application made for a duplex dwelling or a multiple dwelling, the Town Commission shall have regard to the level of compliance with this Local Planning Policy (L.P.P.), the provisions of any Advisory Development Plan (A.D.P.) in force in the area and relevant provisions of the Local Government (Planning & Development) Act.
- 1.5 This policy may be amended from time to time and the Town Commission accepts no responsibility for any matter or action caused by subsequent amendments made to the policy. Intending applicants should check with the Town Office before submitting a formal application.
- 1.6 This policy is for guidance only and compliance does not ensure approval. The Advisory Development Plan and the Local Government (Planning & Environment) Act, 1990 list other matters which must be considered by the Town Commission in making its decision.
- 1.7 This policy establishes development standards which the Town Commission requires for new development. The standards are divided into two classes as follows:-

Performance Standards are used to encourage better design and siting of residential buildings. The various performance standards are designed to achieve the overall objectives of this policy while not imposing specific requirements.

Prescriptive Standards are specific design requirements which must, in most cases, be achieved. The prescriptive standards relate to density control, carparking, landscaping and other similar issues.

- 1.8 Rights of appeal to the Planning and Environment Court exist for applicants or objectors unsatisfied with a decision made by the Town Commission. Details are provided in the Act.
- 1.9 Any person wishing to make an application is advised to have pre-submission discussions with an appropriate officer of the Town Office to ensure that the proposal accords with the objectives of this policy and the Advisory Development Plan, and the application complies with the requirements of the Interim Development Control Regulation, the Local Government (Planning & Development) Act and Regulations and any other relevant local planning policies or statutes.
- 1.10 Definitions of terms used are contained in section 5 of this policy.

2. OBJECTIVES OF POLICY

2.1 GENERAL OBJECTIVE

To realise the best residential development potential of individual sites while ensuring other objectives of the policy are satisfied.

2.2 AMENITY

To ensure that the level of amenity enjoyed by neighbours and in the locality generally is preserved or enhanced.

2.3 SAFETY

To ensure that safe and convenient pedestrian and vehicle movement within and adjacent to the site is achieved and that the nearby road network is capable of accommodating additional traffic flows.

2.4 PARKING

To ensure that adequate and convenient provision is made on the site for parking for both residents and visitors.

2.5 HEALTH

To ensure that adequate provision is made for access to sunlight, breezes and outdoor living space for all residents and reasonable arrangements are made for the laundering and drying of clothes and the disposal of garbage.

2.6 CLIMATE

To ensure that new development is suitable for and takes due account of Weipa's tropical climate.

2.7 SERVICES

To ensure that all relevant services are supplied to the site in a technically and environmentally satisfactory manner.

3. LAND SUITABLE FOR DUPLEX DWELLINGS & MULTIPLE DWELLING

In accordance with the provisions of the Interim Development Control Regulation, the Town Commission has adopted an Advisory Development Plan (ADP). The ADP states certain planning objectives and sets out to achieve those objectives by implementing strategies also contained in the ADP.

The ADP nominates preferred dominant land use types for various parts of Weipa. Duplex dwellings and multiple dwellings will generally be permitted only in areas designed as Residential in the ADP.

4. DEVELOPMENT STANDARDS

4.1 INTRODUCTION

In assessing an application for an Interim Development Permit, the Town Commission seeks to achieve the objectives of this policy through quality of build and good design. To achieve the objectives the Town Commission may relax the prescriptive standards if it is satisfied that the objectives of the performance standards are achieved, that is, good quality residential development based on good design.

On the other hand, the Town Commission may refuse an application even if it complies with the minimum prescriptive standards if, in its opinion, the proposed development is substandard and would not achieve the broad objectives of this policy or desired performance standards.

4.2 DENSITY CONTROL

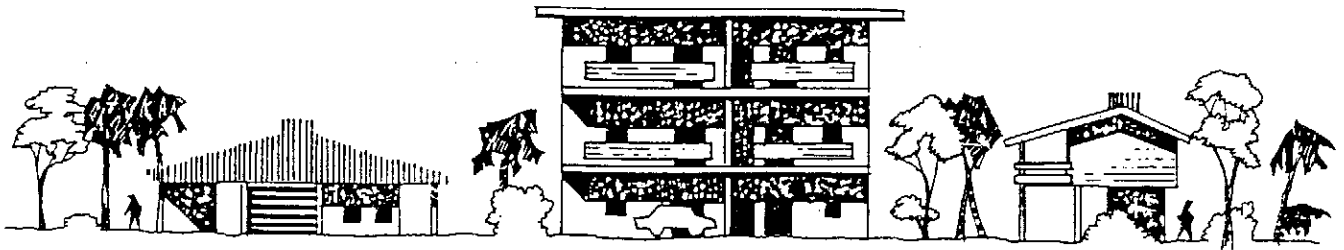
PERFORMANCE STANDARDS

Density control is the basic planning tool to govern the intensity of residential development in Weipa. The intention of density control is to limit the number of dwelling units per unit area of site of land designated as Residential in the Advisory Development Plan.

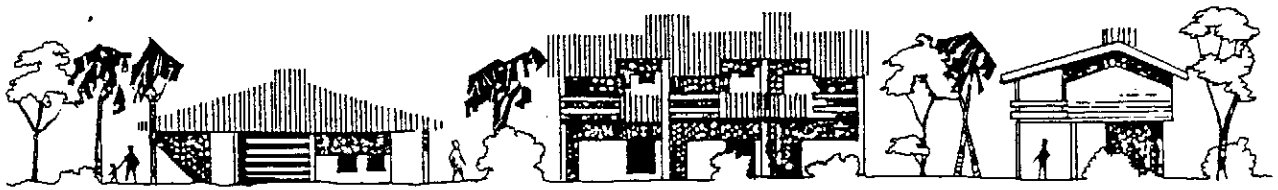
The important performance goals of density control are to ensure that:-

- a) There is no overcrowding or overbuilding on any site.
- b) The height, bulk, form, siting and character of development proposals are compatible in size and scale with the residential development in the locality. (see **Figure 1**)

Figure 1 - SIZE AND SCALE

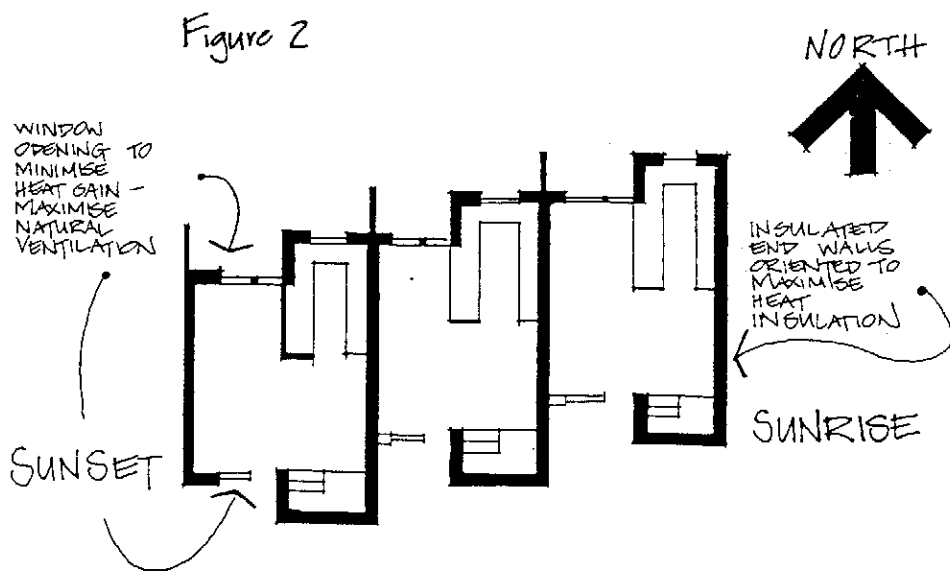


INCOMPATIBLE DEVELOPMENT



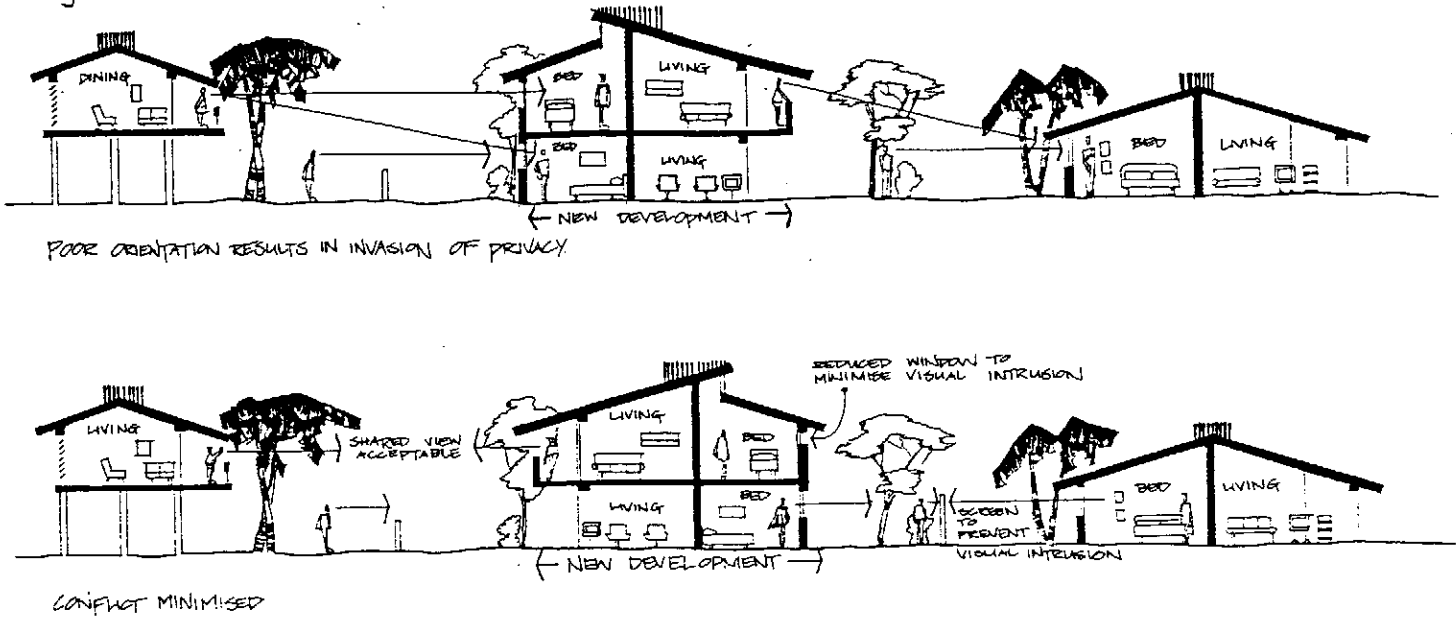
COMPATIBLE DEVELOPMENT

- c) A comfortable living environment is achieved for residents by taking full advantage of the climate with proper orientation of buildings, maximum cross-ventilation and maximum protection against rain and sun. (see Figure 2)



- d) Adequate privacy is provided between new and existing neighbouring development. (see Figure 3)

Figure 3



- e) Urban services such as water and sewerage services, parks and recreation facilities, the local road network and immediate road frontage to any site are adequate to accommodate new development either individually or generally.

PRESCRIPTIVE STANDARDS

The prescriptive standards for density control are as shown in Table 1 below:-

Table 1 - Prescriptive Density Standards

Use Type	Number of Storeys	Site area required in respect of each dwelling unit
Duplex Dwelling	1	1 bedroom - 300m ²
		2 bedrooms - 350m ²
		3 or 4 bedrooms - 380m ²
	2	1 bedroom - 300m ²
		2 bedrooms - 300m ²
		3 or 4 bedrooms - 350m ²
Multiple Dwelling	1	1 bedroom - 250m ²
		2 bedrooms - 300m ²
		3 or 4 bedrooms - 350m ²
	2	1 bedroom - 220m ²
		2 bedrooms - 260m ²
		3 or 4 bedrooms - 310m ²
	3	As determined by the Town Commission on a site specific basis

4.3 VEHICLE ACCESS, DRIVEWAYS AND CARPARKING

PERFORMANCE STANDARDS

Vehicle access and on-site carparking areas should be designed:

- (a) to provide adequate off-street parking for residents and visitors.
- (b) to ensure that vehicles can be driven within designated parts of the site and enter or leave the property in forward gear.
- (c) so that the residents on the site or the adjoining site are not unduly annoyed by noise, headlight glare or suffer general lack of privacy.
- (d) to minimise interruptions to the free flow of traffic in the street.
- (e) to ensure that the location of vehicular crossings and footpaths within the site are conducive to both pedestrian and vehicular movement and safety.
- (f) to protect sight-lines for vehicles entering or leaving the property.

PRESCRIPTIVE STANDARDS

- (a) All carparking spaces shall be not less than 5.5 metres long x 2.7 metres wide provided that where the side of a carparking space adjoins a wall or columns which in the opinion of the Town Commission may unreasonably restrict free access to the carparking space, then the minimum width shall be 3.0 metres.
- (b) Aisle width adjacent to carparking spaces shall be sufficient to allow ingress to and egress from the space. Aisle width of 6 metres is generally required adjacent to carparking spaces.

- (c) Provision shall be made for ingress and egress of vehicles to and from the site in a forward gear. In special circumstances where sites abut streets designed to carry low volumes of traffic and particularly in the case of a duplex dwelling located on a corner allotment, permission may be granted for a maximum of two reverse car spaces for each frontage of the property.
- (d) Any internal driveway which serves as an access to the street for nine (9) or more carparking spaces shall be a minimum of 6 metres in width, provided that where only one way traffic flow is permitted, then the driveway shall be a minimum of 3.5 metres in width.
- (e) Any internal driveway which serves as a point of access to the street for eight (8) or fewer carparking spaces shall be a minimum of 3.5 metres in width provided that:-
 - (i) where any such driveway exceeds 15 metres in length, then a passing bay not less than 2.5 metres in width and 6 metres in length (with extended tapers) shall be provided, and,
 - (ii) the driveway width from the property boundary for a distance of 5 metres shall be not less than 6 metres.
- (f) Points of pedestrian access to buildings containing more than ten dwelling units shall be provided separately from vehicle access points. Pedestrian access at ground level which serves more than one dwelling shall not pass closer than 3 metres to any window of any habitable room of any other dwelling.
- (g) Driveways shall be constructed of concrete, paving blocks or other aesthetically acceptable, generally impervious material, to the satisfaction of the Town Commission.
- (h) Driveways shall be designed and constructed to be self draining to a lawful point of discharge.

- (i) Not less than two carparking spaces shall be provided for each dwelling unit. Ingress and egress to each space must be achievable independently of any other space.
- (j) In the case of a development comprising four (4) or more dwelling units, one space for every 2 dwelling units must be delineated and marked "Visitors Parking Space" and a sign clearly visible from the street must be placed at the entrance to the driveway indicating that visitor parking is provided on-site.
- (k) No parking space may be located within 6 metres of the principal street frontage and no parking space or driveway may be less than 0.5 metres from any side or rear boundary. In the case of a corner lot, no parking space shall be permitted within 2 metres of the secondary frontage.
- (l) A parking area designed for three or more vehicles shall be no less than 1.5 metres from windows of habitable rooms, or no less than 4 metres to major openings to living rooms.
- (m) No access points should be less than 10 metres from a street intersection.
- (n) Vehicle crossovers from the property boundary to the kerb and channel are required. In the case of a duplex dwelling, car tracks, constructed of concrete or an acceptable alternative paving system is acceptable.

4.4 ON-SITE OPEN SPACE

For the purposes of this policy, on-site open space is classified into categories as follows:-

Common open space which serves the predominantly visual function of providing relief from building bulk and form, separating buildings and providing opportunity for screen planting,

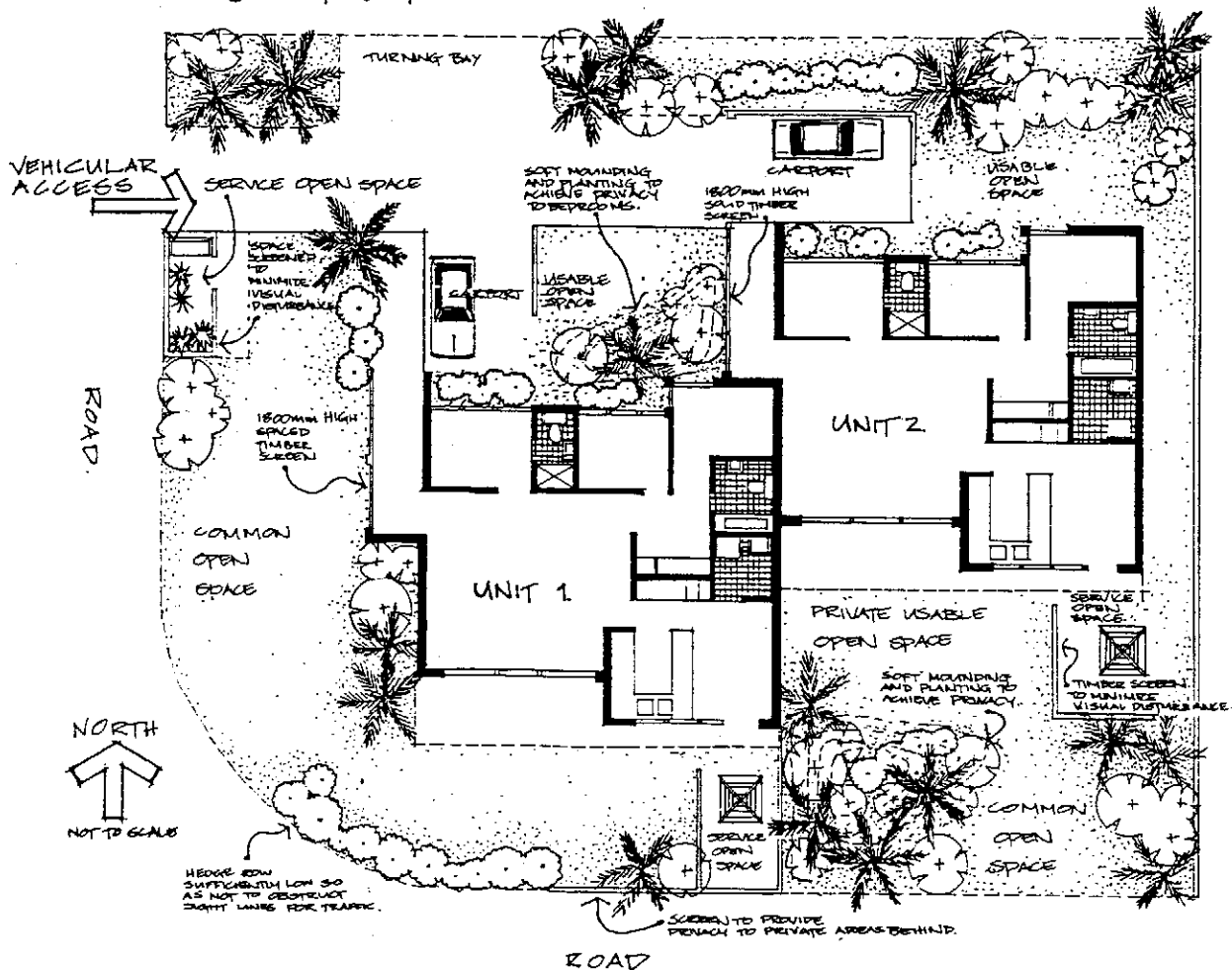
Private usable open space, usually in the form of a courtyard, balcony or screened area and

usually adjacent to habitable rooms, particularly a living room, and offering a relatively secure and private area for barbecues, games or gardening, and

Service open space which provides spaces for clothes drying, bin storage, pedestrian links, driveways and uncovered carparking areas.

Use of on site open space is demonstrated in **Figure 4**.

Figure 4
ON SITE OPEN SPACE



PERFORMANCE STANDARDS

Common Open Space should be provided in sufficient area and with dimensions and location so that habitable rooms of dwelling units have adequate privacy separation and there is ample

opportunity for landscaping to soften the building form and integrate the development into the streetscape of the locality.

Common Open Space may also include active open space functions for use by residents and guests, such as a swimming pool or barbecue area.

Private Usable Open Space should be provided immediately adjacent to a dwelling unit and be capable of use by the residents of that dwelling unit for passive recreation or outdoor dining with a high degree of privacy.

Service Open Space is by and large constrained by dedication to its primary purpose. However, design should take care that this class of open space is positioned so as to best serve the goals of high amenity, privacy, convenience and health. For instance, the primary parking space for each dwelling unit should be conveniently located with respect to the dwelling unit, preferably with the connection being under cover. Similarly, bin storage areas should be provided and be easily accessed but at discreet locations and yet with good connectivity to the street frontage.

PRESCRIPTIVE STANDARDS

Common Open Space shall be provided in accordance with Table 2.

Table 2 - Common Open Space

	Minimum Common Open Space per Dwelling Unit	Minimum Dimension of Common Open Space
Duplex Dwelling	200	Between building and street frontage - 6 metres Other locations - 4 metres
Multiple Dwelling	100	4 metres

NOTE: Common Open Space may include swimming pool enclosures and similar recreation areas.

Private usable open space shall be provided in accordance with Table 3.

Table 3 - Private Usable Open Space

	Minimum Usable Private Open Space	Minimum dimension of Usable Private Open Space
Duplex Dwelling or Multiple Dwelling	30m ²	In the case of a balcony - 2.5 metres In any other case - 4 metres

Service open space shall be provided so that:-

- a) no driveway is located within 3 metres of a habitable room,
- b) no parking space is located within 1.5 metres of a habitable room,
- c) each dwelling unit has direct access to a parking space dedicated to use in connection with that dwelling unit,
- d) each dwelling unit has located adjacent to it, a bin storage area which is concrete or similarly paved, screened and conveniently serviced by an outdoor tap.

4.5 BUILDING SETBACKS

PERFORMANCE STANDARDS

Building setbacks from street boundaries can give scale or importance to a street or a public place. For example, a suburban avenue with large setbacks give the road a feeling of spaciousness.

Building setbacks from street boundaries also serve as a buffer against street traffic and noise and allow “framing” of the built structures by landscaping.

Safety considerations are also addressed by setbacks. Sight lines for traffic, especially at street corners, can be protected through adoption of appropriate setbacks.

Side and rear setbacks, in combination with building design should be used to ensure privacy. Setbacks should be chosen having regard to the space between buildings rather than just the distance to a property boundary. The prime objective always is the achievement of privacy both for existing and proposed buildings.

Other objectives for side and rear space are:-

- to allow light and natural ventilation into each dwelling unit;
- where required, provide vehicle or pedestrian pathways;
- to provide fire control access and escape routes and prevent the spread of fire between buildings.

PRESCRIPTIVE STANDARDS

Setbacks from front, side and rear boundaries shall be not less than those setbacks prescribed by the Building Code of Australia.

4.6 SCREENING

PERFORMANCE STANDARDS

- (a) to maximise the privacy of private usable open space without inhibiting natural ventilation.
- (b) to achieve a standard using materials or landscaping which will enhance the composition of developments along a street.

- (c) in special circumstances such as street corners, limit height to protect the sight-lines of approaching traffic.

PRESCRIPTIVE STANDARDS

Minimum height of screening shall be 1.5 metres unless subject to special circumstances.

This height requirement does not apply to bin storage areas.

5. DEFINITIONS

Bedroom means a habitable room designed and constructed or adapted or capable of adaption so as to be suitable for exclusive use as a bedroom and includes a bedroom and a room described as sewing room, music room, study, computer room and the like.

Duplex Dwelling means two dwellings comprising self contained accommodation, each for the exclusive use of one household, where the buildings are erected on one allotment and have the appearance of two dwelling houses or the appearance of one dwelling house when erected so as to abut at a common wall or when one is constructed wholly or partially above the other.

The term includes such outbuildings as are incidental to and necessarily associated with duplex dwelling and includes hobby gardening and the keeping of domestic pets.

Dwelling Unit means a portion of a building which is used or intended, adapted or designed for use as a separate domicile including each dwelling unit of a duplex dwelling or multiple dwelling.

Multiple Dwelling means premises used wholly or in part for residential purposes by three or more households living separately in self contained dwelling units. The term includes buildings commonly known as flats, home units, apartments, terrace houses, town houses, villa units, holiday units and the like but does not include hotel, motel, caravan park or other accommodation which is not self contained.

Town Commission means the Town Commission established in accordance with the provisions of the Comalco Aluminium Pty Ltd. Agreement Act of 1957 or in the absence of a Town Commission for the time being, Comalco Aluminium Limited or its delegated authority, acting in accordance with the provisions of the aforesaid Act.